

CASE STUDY

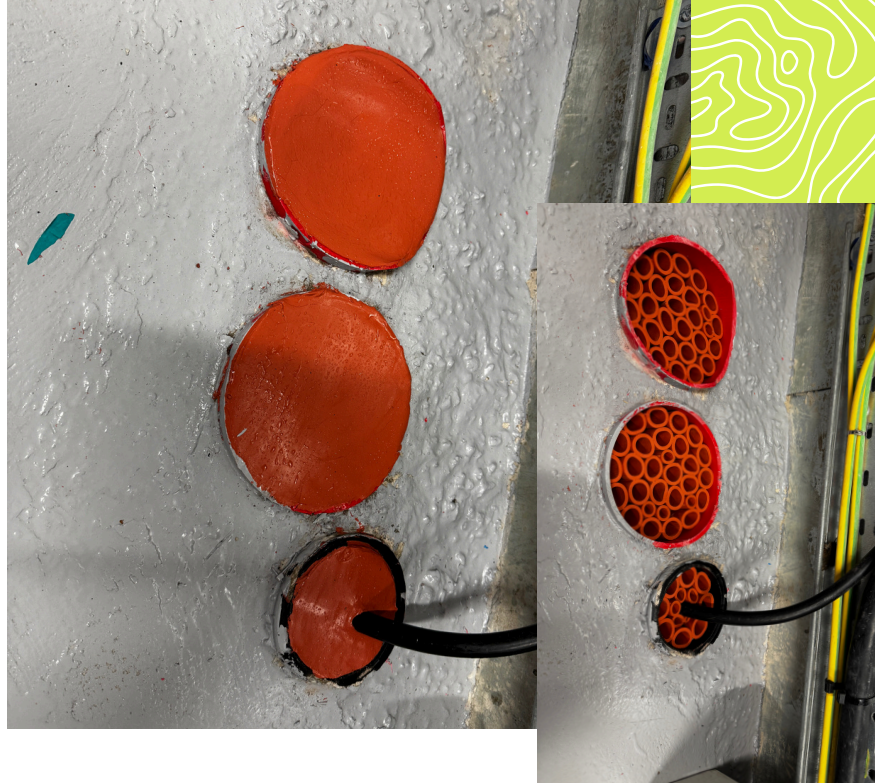


CABLE DUCT SEALING

FEB 2025

To improve the integrity and safety of a plant room, a specialised duct sealing system was installed to protect against gas and water ingress.

Our trained team implemented a reliable and compliant sealing solution using a mastic sealing product, delivering long-term resilience in critical infrastructure.



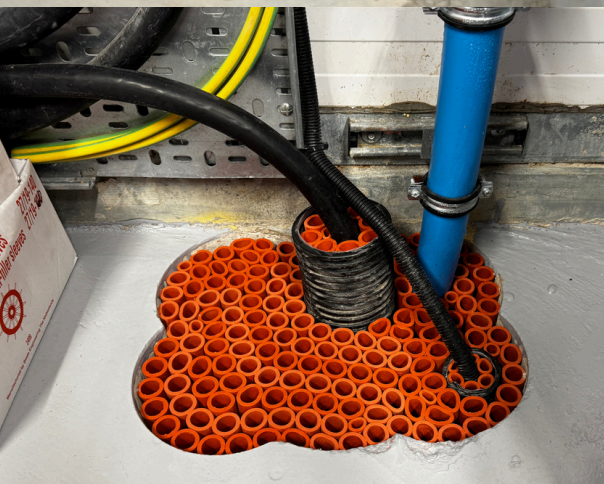
AT A GLANCE

Challenges

- Multiple vertical core penetrations
- Tight plant room access
- Gas and water sealing

Result

- Watertight seals
- Gas ingress prevention
- Regulation compliance
- Minimal operational disruption



SCOPE OF WORKS

A two-man team of trained operatives attended site equipped with all necessary tools and Mastic Sealing System. Works included:

- Installation of the Mastic gas and watertight duct sealing system to six 6" and two 4" vertical core holes.
- Internal application of the system to ensure long-term sealing integrity from within the plant room.
- Use of certified consumables and equipment specifically designed for high-risk environments such as utility and plant infrastructure.
- Execution of the works with precision and care to avoid disruption to surrounding services.

OUTCOME

The plant room is now protected with a highly durable, maintenance-free duct sealing system, providing robust protection from water and gas ingress.

This project enhances the facility's safety profile, supports regulatory compliance, and ensures the long-term reliability of critical services.



Need to safeguard your critical infrastructure against gas or water ingress?
www.gptenvironmental.co.uk Call us today 01656 741799

